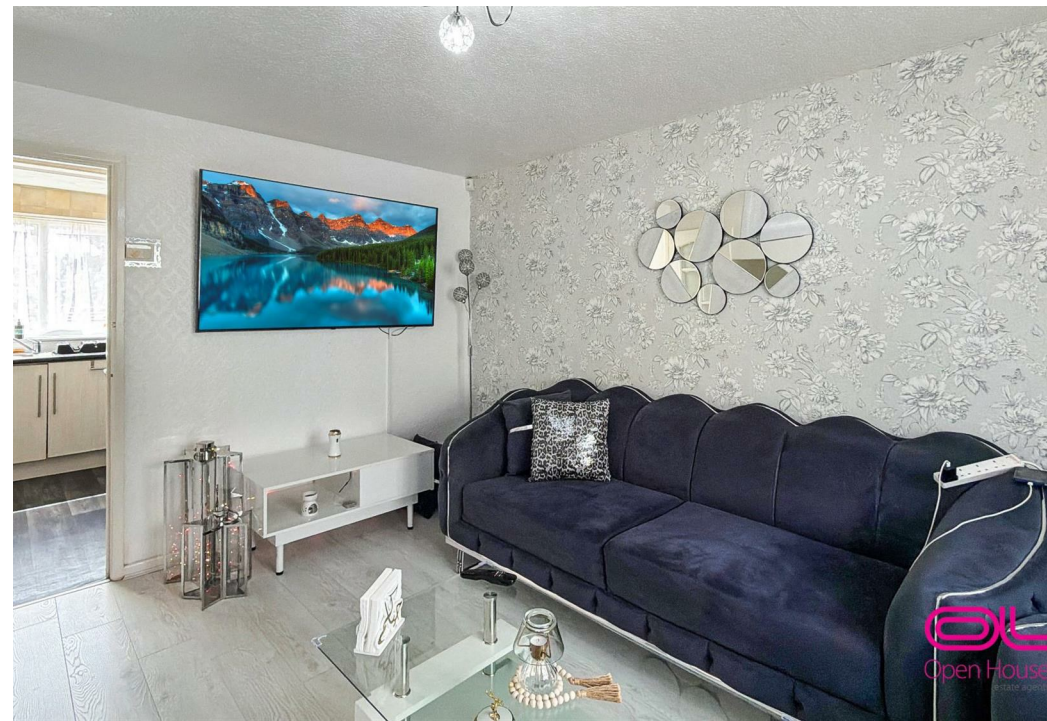
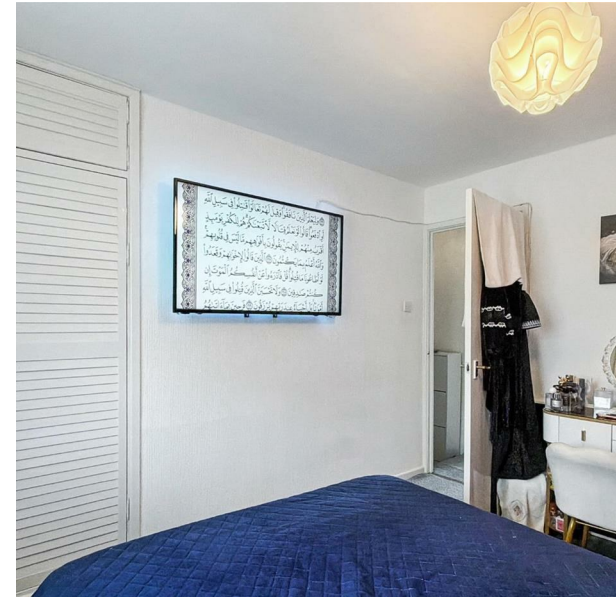


Deane Road, Bolton, BL3 5HN

£155,000

Council Tax Band: A



This two-bedroom terraced property offers practical living accommodation with a reception room, fitted kitchen, and family bathroom, making it ideal for first-time buyers or investors.

Key Features:

Two-bedroom terraced house with reception room, fitted kitchen, family bathroom, and separate garage, located in the popular Deane area of Bolton.

Location Highlights:

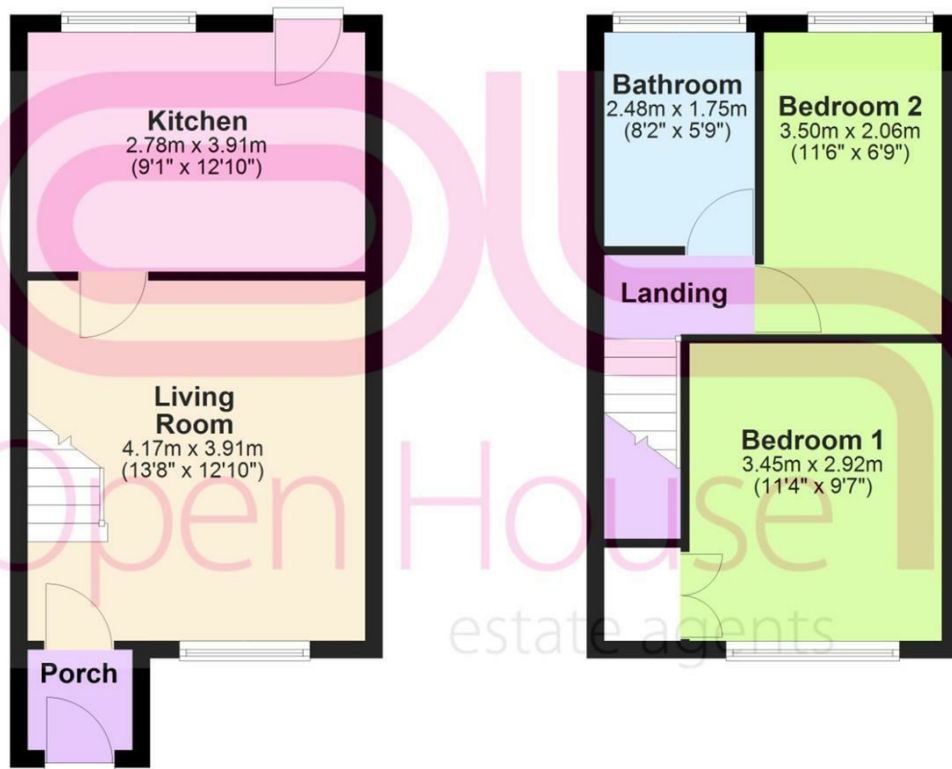
Situated on Deane Road in Bolton, the property is close to local shops, schools, supermarkets, and transport links, with convenient access to Bolton town centre and surrounding areas.



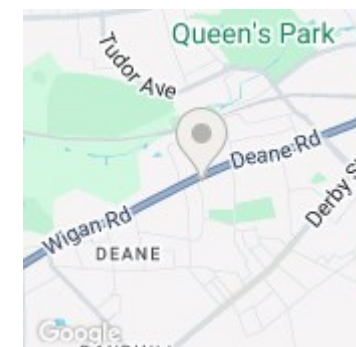
404 Derby Street, Bolton, BL3 6LS
 01204 589600
 bolton@localagent.co.uk
 www.openhousebolton.co.uk

Ground Floor
 Approx. 29.1 sq. metres (313.4 sq. feet)

First Floor
 Approx. 27.6 sq. metres (296.8 sq. feet)



Total area: approx. 56.7 sq. metres (610.2 sq. feet)



Energy Efficiency Rating		
	Current	Potential
Very energy efficient - lower running costs		
(92 plus) A		
(81-91) B		
(69-80) C	76	
(55-68) D		
(39-54) E		
(21-38) F		
(1-20) G		
Not energy efficient - higher running costs		
England & Wales	EU Directive 2002/91/EC	